

Assembly Instructions

Assembly Packing List



M5 Screws
QTY: 36



M6 Screws
QTY: 16



Flat Head Screws
QTY: 8



L Wrench
QTY: 1



Locks
QTY: 4



Hinge #1
QTY: 2



Hinge #2
QTY: 2



Door Pin
QTY: 1



M6 Nuts
QTY: 16



Small Nuts
QTY: 10



Connecting Plates
QTY: 4



Pin #1
QTY: 2



Pin #2
QTY: 2



Front Door
Locking Tab
QTY: 1



Side Door
Locking Tab
QTY: 2



Back Door
Locking Tab
QTY: 1



Front Panel
QTY: 1



Bottom Panel
QTY: 1



Back Panel
QTY: 1



Door Panel
QTY: 1



Top Panel
QTY: 1



Side Panel
QTY: 2



Rear Swing Panel
QTY: 1



Mounting Rail
QTY: 4



Mounting Profile
QTY: 4

Step 1: Position the back panel into the bottom panel



Figure 1



Figure 2

To start, position the back panel onto the bottom panel. To have the cabinet swing out to the right, position the back panel with the locking slot to the left as seen in figure 1. To have the cabinet swing out to the left, position the back panel with the locking slot to the right as seen in figure 2.

Step 2: Fix the back panel to the bottom panel



Figure 3



Figure 4

Screw in the back panel to the bottom panel using two M5 screws

Step 3: Fix the front panel to the bottom panel



Figure 5

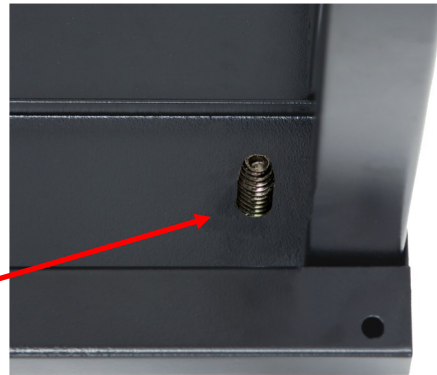


Figure 6

Place the front panel, with door detached, into the front slot of the bottom panel. Then secure by using two M5.

Step 4: Fix the top panel to the front and back panels



Figure 7



Figure 8

Place the top panel on top of the front and back panels and secure using four M5 screws.

Step 5: Attach connecting plates to all back corners

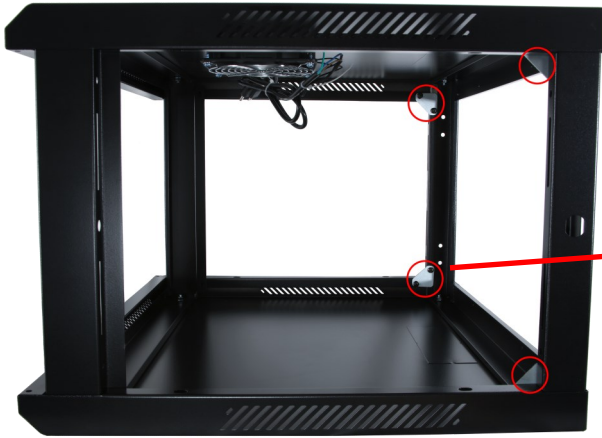


Figure 9



Figure 10

Using the four connecting plates and eight M5 screws, secure the top and bottom panels to the back panel. Be sure to repeat on all four corners in the back of the cabinet.

Step 6: Fix the mounting rails to the top and bottom panels

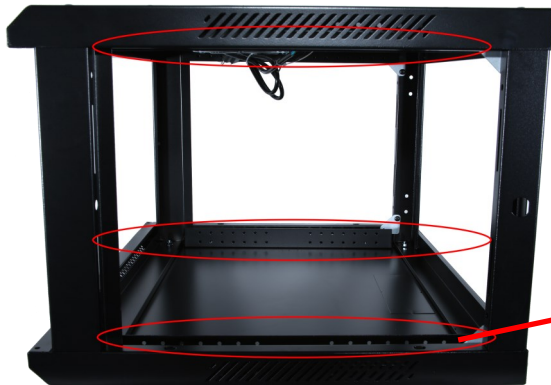


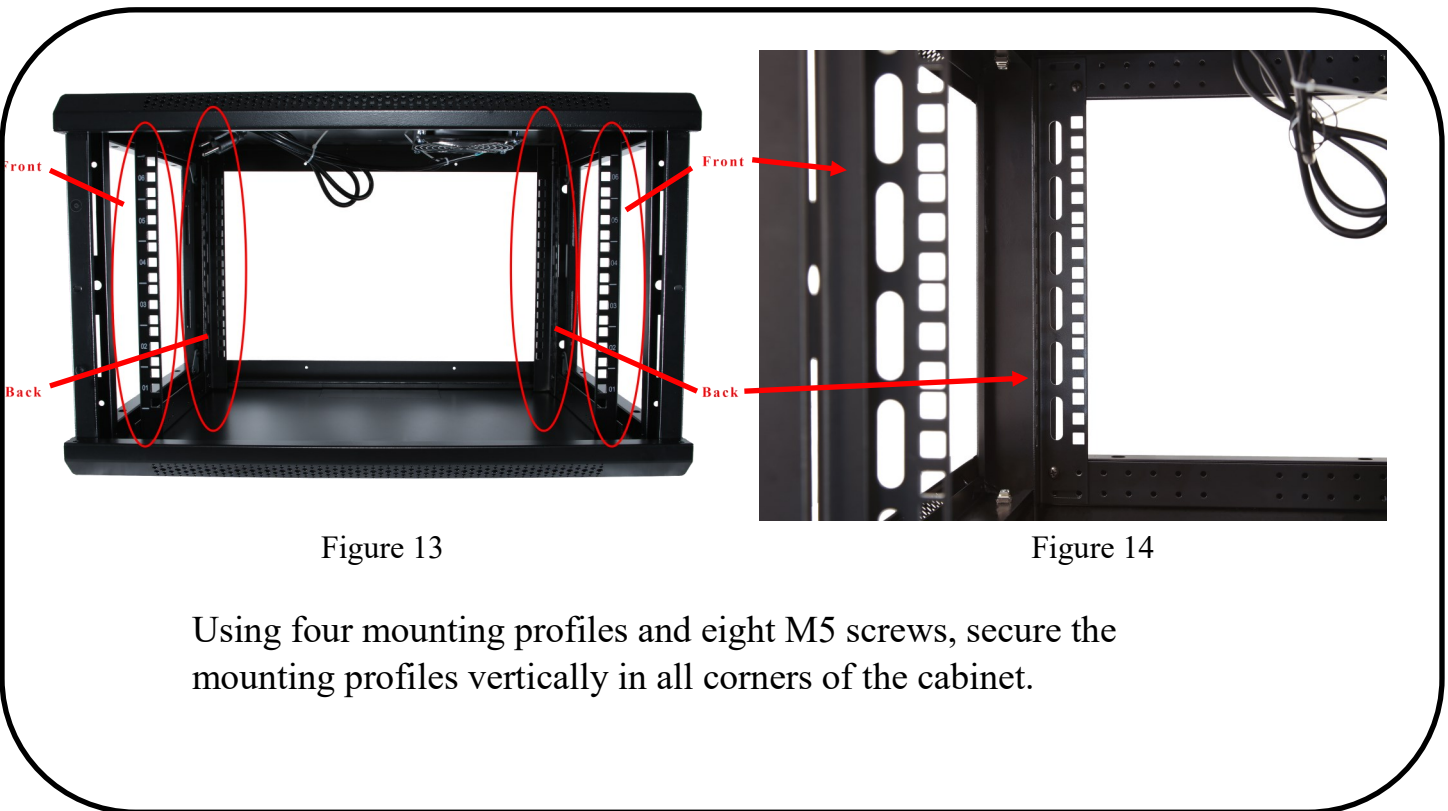
Figure 11



Figure 12

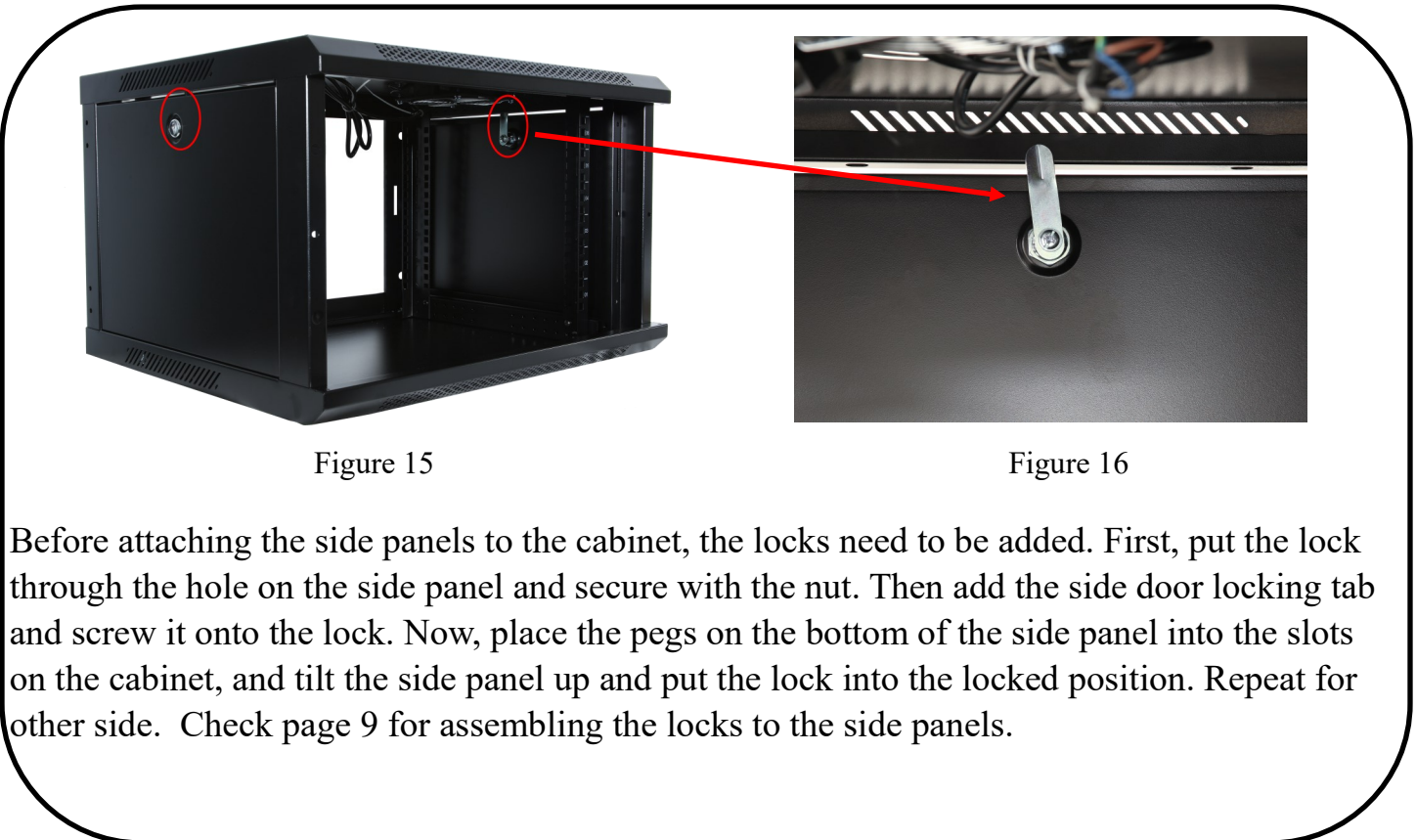
Using the four mounting rails, 12 M5 screws, mount the mounting rails to the cabinet. To do this, secure two mounting on the top panel and two mounting rails on the bottom panel, running parallel to the side panels.

Step 7: Attach mounting profiles to the mounting rails



Using four mounting profiles and eight M5 screws, secure the mounting profiles vertically in all corners of the cabinet.

Step 8: Attach side panels



Before attaching the side panels to the cabinet, the locks need to be added. First, put the lock through the hole on the side panel and secure with the nut. Then add the side door locking tab and screw it onto the lock. Now, place the pegs on the bottom of the side panel into the slots on the cabinet, and tilt the side panel up and put the lock into the locked position. Repeat for other side. Check page 9 for assembling the locks to the side panels.

Assembly Instructions

Step 9: Fix front door onto front panel



Figure 17

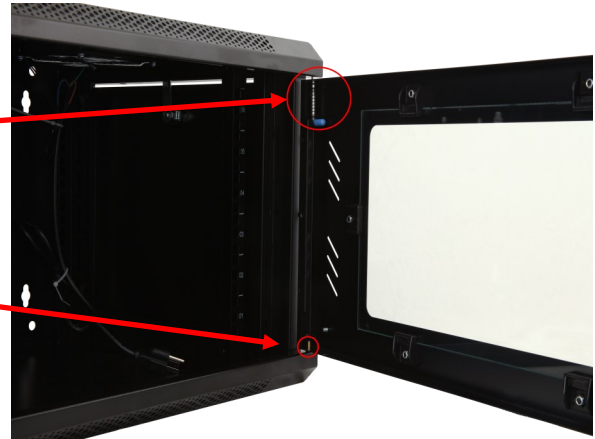


Figure 18

Before adding the front door, the lock needs to be added. Place the lock into the hole in the front door panel and secure with the nut. Then fix the front door locking tab on the lock and screw it in place. Now we can attach the door, by placing the door pin in the hole at the front right side of the bottom panel then placing the door on the pin. From the inside, pull down the top door peg and fix the door into place. Check page 9 for help assembling the lock to the door.

Step 10: Set up back panel



Figure 19



Figure 20



Figure 21

Now place two pins #2 in the holes on the back panel as seen in figure 20. Then place two hinges #2 on the opposite side of the panel, lined up with the holes, and secure by placing both hinges #1 on top and securing to panel with four flat head screws and small nuts.

Step 11: Attach pins #1 to rear swing panel

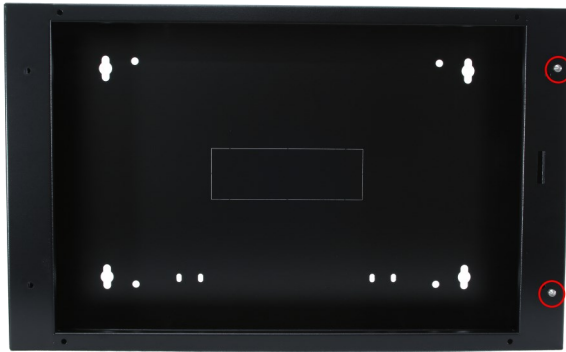


Figure 22

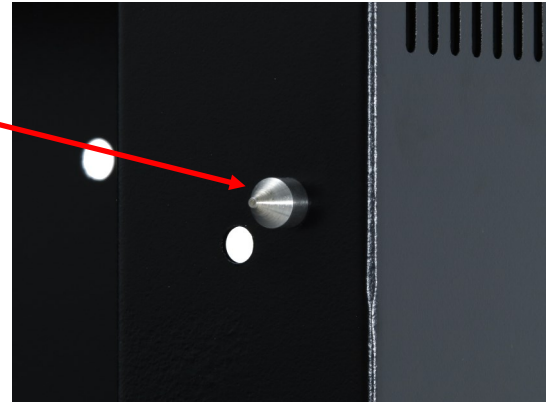


Figure 23

Place both pins #1 in the holes located on the front right side of the rear swing panel and secure using two small nuts.

Step 12: Add lock to the back panel

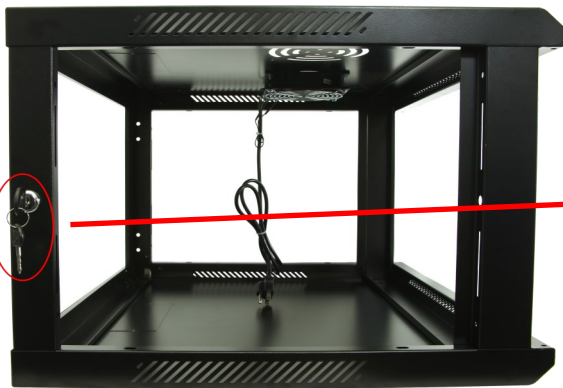


Figure 24



Figure 25



Figure 26

In this step, the lock will be added to the back panel. Place the lock into the hole on the back panel and secure to panel with a nut, as seen in figure 25. Then you will want to place the back door locking tab onto the back of the lock and secure down with a screw, as seen in figure 26. Check page 9 for more lock assembly information.

▶▶▶ Step 13: Secure rear swing panel

Figure 27

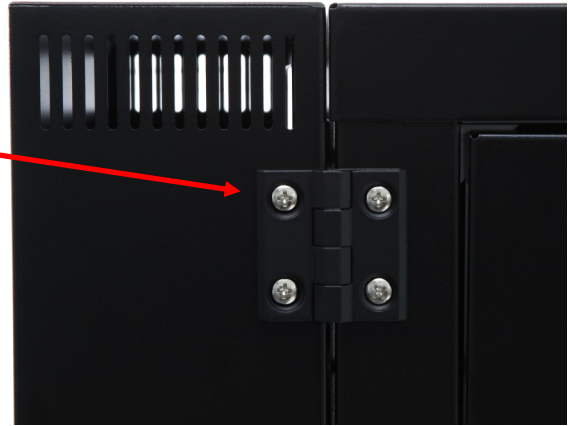


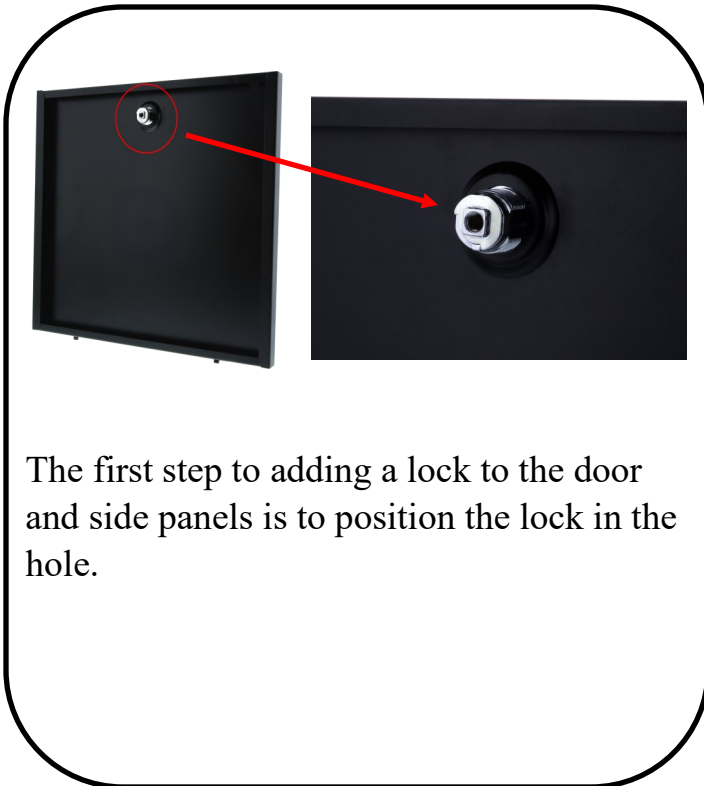
Figure 28

To finish assembling your cabinet, attach the rear swing panel to the hinges on the back using four flat head screws and small nuts.

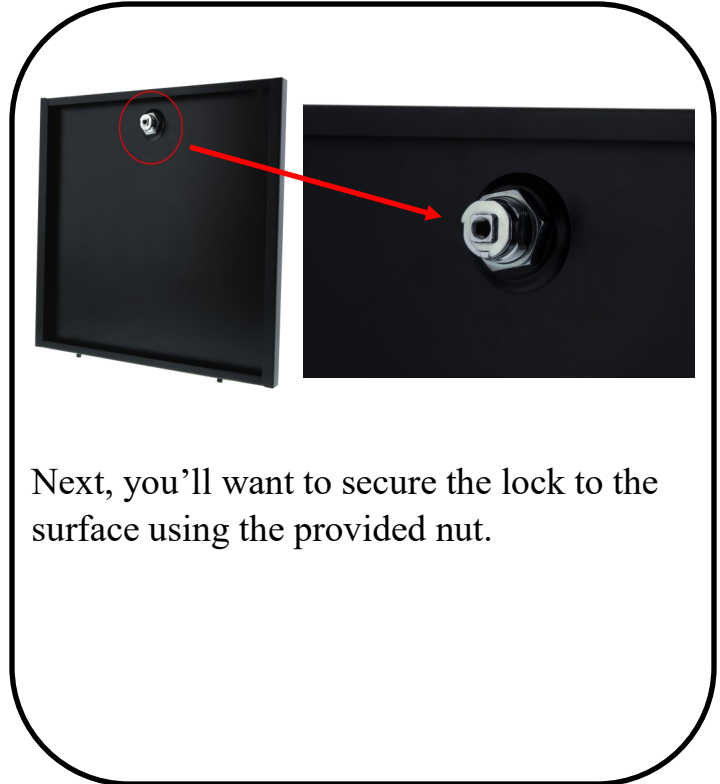
▶▶▶ Your cabinet is now complete! Thank you!

Assembly Instructions

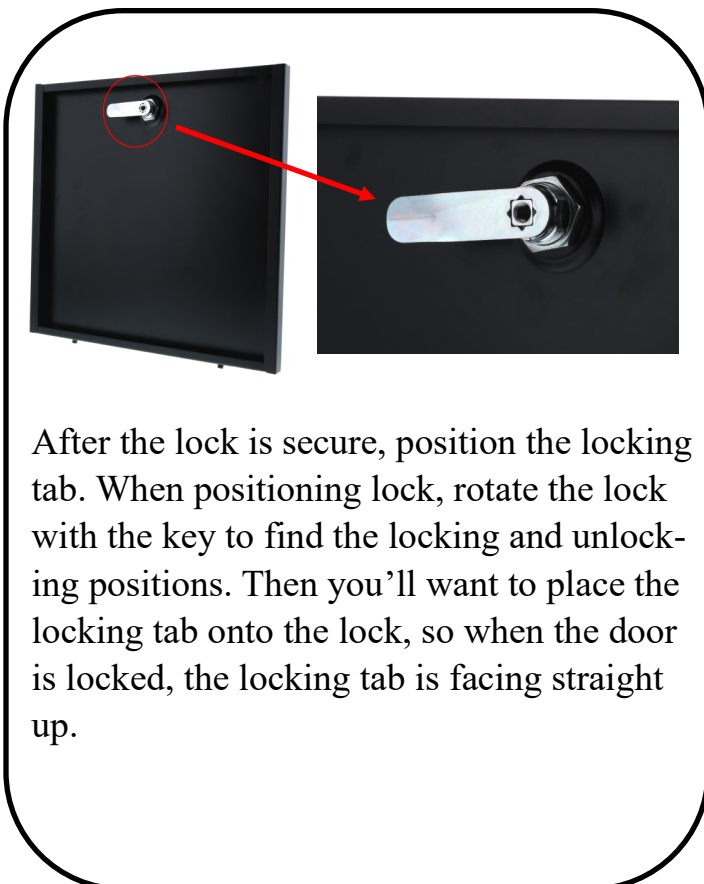
Step 1: Position lock



Step 2: Secure Lock



Step 3: Add locking tab



Step 4: Secure locking tab

