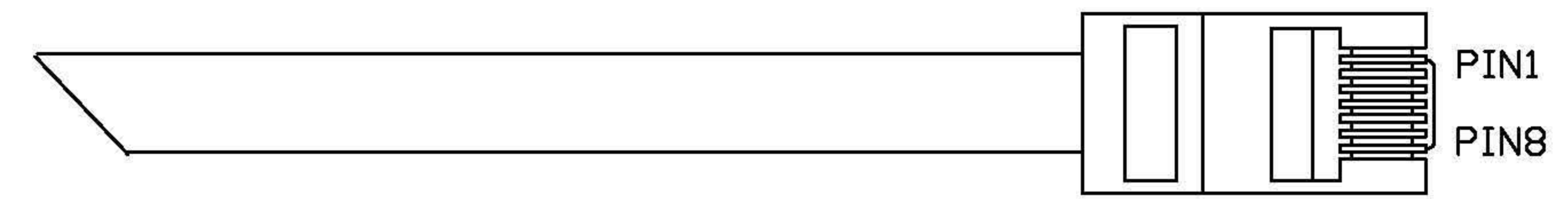
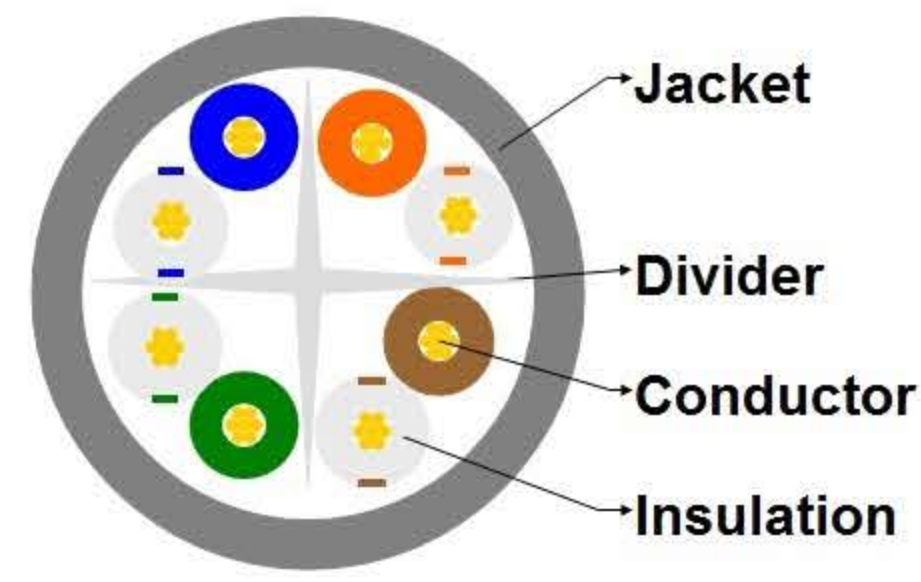
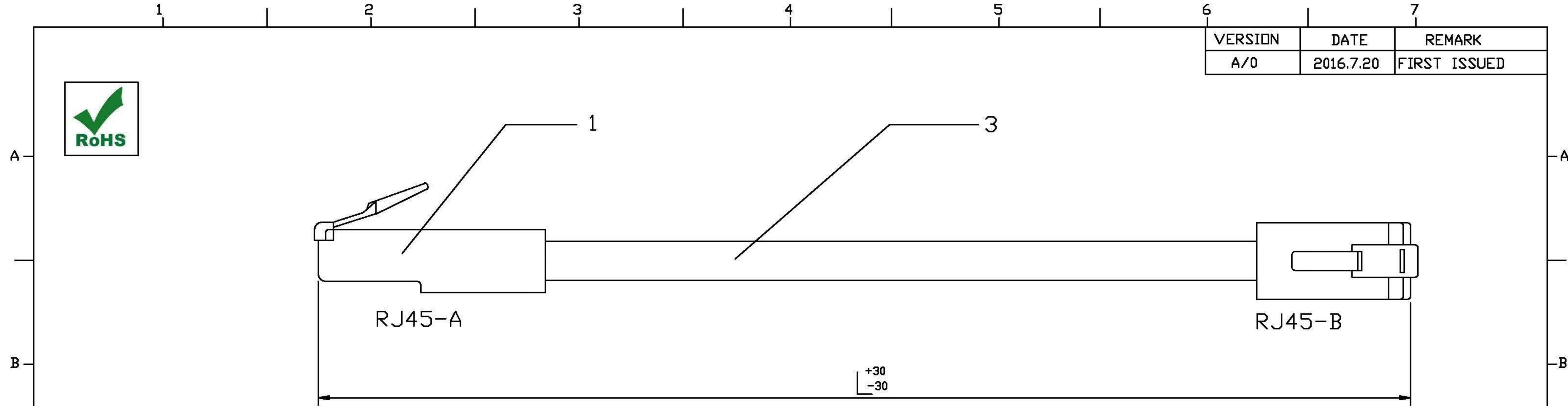


VERSION	DATE	REMARK
A/0	2016.7.20	FIRST ISSUED



WIREFMAP(568B)

RJ45(A)	COLOR	RJ45(B)
1	WHITE/ORANGE	1
2	ORANGE	2
3	WHITE/GREEN	3
4	BLUE	4
5	WHITE/BLUE	5
6	GREEN	6
7	WHITE/BROWN	7
8	BROWN	8

NOTES:

1. COMPLY WITH ANSI/TIA-568-C.2
2. ACCORDING TO ISO/IEC-11801
3. FULLY ROHS COMPLIANT
4. FLUKE TEST PASS GUARANTEE
5. SUPPORT MOST DATA&VOICE APPLICATIONS

TITLE:		UNIT:	MM
PC-CAT6Nxx-xxx		SHEET:	1/1
		SCALE:	NA
		PROJ.	
DWG NO.:	GYAC6-006	REV:	A/0
APPROVE:	CHECK:	DRAW:	
YOU CHEN	KEVIN WANG	H	



NO	ITEM	DESCRIPTION	Q'TY	UNIT
3	CABLE	UTP CAT.6, 7/0.18mm PURE COPPER, 0.98mm PE, CENTER CROSS, 6.1mm UL listed PVC	A/R	M
2	BOOT	NO BOOT	A/R	KG
1	PLUG	RJ45 PLUG, UTP CAT6, REGULAR STYLE, 50U' GOLD PLATED	2	PCS