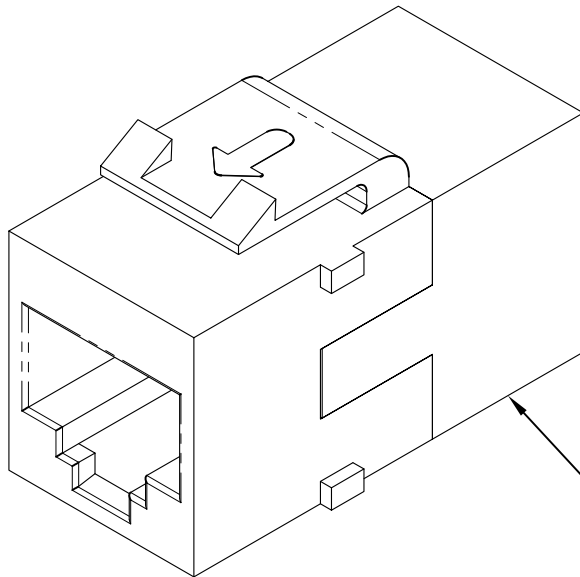


8P8C RJ-45 Category 3 Coupler Module

PRODUCT SPECIFICATION

Package includes:

A. 8P8C RJ-45 Category 3 Coupler Module, 1 pc



RJ-45 CAT 3 Coupler Module

Features and Benefits:

- Provides pin 1-1 RJ-45 voice and low-speed data coupling
- Reduced rear footprint allows for greater connectivity density and provides for more port configurations in a smaller area
- Compatible with all IC107 faceplates, inserts, surface mount boxes, and blank patch panels
- Compatible with all IC108 furniture faceplates, bezels, and surface mount boxes
- Used with ICC ICLC2, ICLC4, ICLC6, ICLC8 line cords, and Category 5e ICPCS5 and ICPCS9 patch cords
- Available in black, ivory, and white
- UL listed

MODULE, COUPLER, CAT 3, RJ-45

ITEM NO. IC107C8RXX

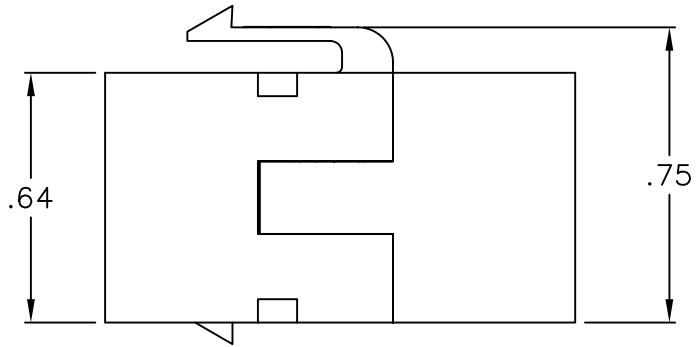
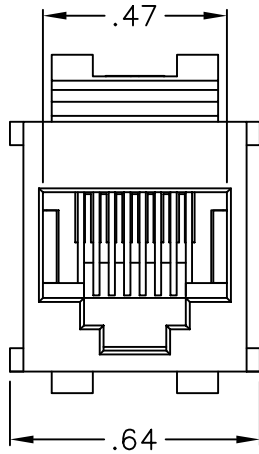
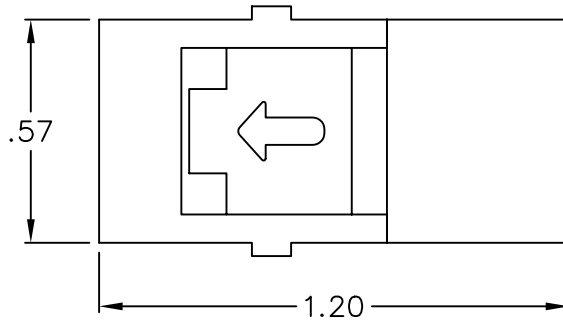
REV. A

DWG NO. PS107C8R00

PAGE NO. 1



CUSTOMER CARE / TECHNICAL SUPPORT * CSR@ICC.COM / 888-ASK-4-ICC (275-4422) * 14700 Alondra Blvd., La Mirada, CA 90638 * www.icc.com



NOTE: UNLESS OTHERWISE SPECIFIED

1. ELECTRICAL:

- A. CURRENT RATING: 1.5 AMPS MAX
- B. VOLTAGE RATING: 150 VOLTS ALTERNATING
- C. DIELECTRIC WITHSTANDING VOLTAGE: 1000 VOLTS RMS, 60 HZ
- D. INSULATION RESISTANCE: > 10 MOHMS

2. MECHANICAL:

- A. MATING FORCE: 5 LBS MAX
- B. UNMATING FORCE: 5 LBS MAX
- C. PLUG RETENTION IN JACK: 20 LBS MIN
- D. DURABILITY: 750 CYCLES

3. MATERIAL & FINISH:

- A. HOUSING: ABS, UL 94V-0
- B. COLOR: BK-BLACK
- C. CONTACT: PHOSPHOR BRONZE GOLD PLATING OVER 100 MICRO INCH NICKLE
- D. GOLD PLATING: 1.27 MICRON/50 MICRO INCH MIN

NEXT: (NEAR END CROSS TALK)	1 MHz > 65 db
	10 MHz > 50 db
	16 MHz > 46 db
	20 MHz > 44 db
INSERTION LOSS:	1 MHz > .006 db
	10 MHz > .008 db
	16 MHz > .02 db
	20 MHz > .02 db

WIRING DIAGRAM	
PIN	PIN
1	1
2	2
3	3
4	4
5	5
6	6
7	7
8	8

UL US FILE NO. 125268

MODULE, COUPLER, CAT 3, RJ-45			
ITEM NO.	IC107C8RXX		REV. A
DWG NO.	PS107C8R00		PAGE NO. 2

CUSTOMER CARE / TECHNICAL SUPPORT * CSR@ICC.COM / 888-ASK-4-ICC (275-4422) * 14700 Alondra Blvd., La Mirada, CA 90638 * www.icc.com