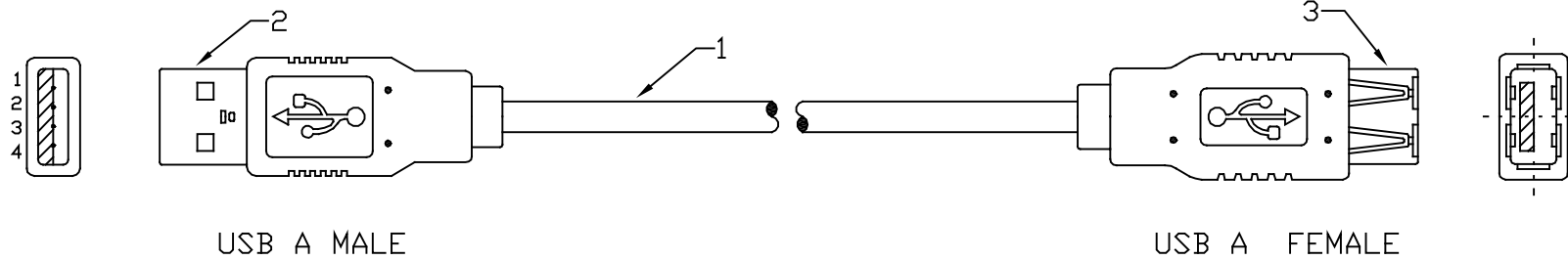
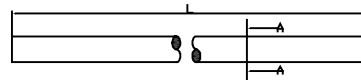
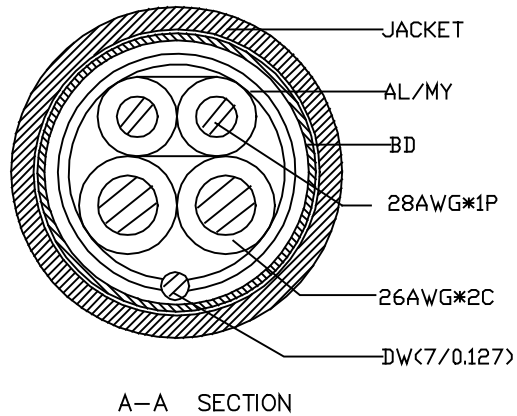


REVISIONS		
REV	DESCRIPTION	APPROVED



USB A MALE

USB A FEMALE



NOTES:

- MOLDED CONNECTOR END REQUIREMENTS:
A: PVC -45P PLATINUM GRAY
- CABLE: 1(28AWG (7/0.127)*1P+26AWG(7/0.163)*2C
+AL/MY+DW(7/0.127)+65%BD(16/5/0.1)JTIN
INSULATION WIRE ONE: FO-PE, OD=φ0.84±0.05mm
COLOR: WHITE&GREEN
INSULATION WIRE TWO: SR-PVC, OD=φ1.0±0.07mm
COLOR: BLACK, RED
JACKET: 80°C 80P PVC OD=5.00±0.15mm
COLOR: PLATINUM GRAY
- FINISHED PRODUCTS LENGTH:
(1) LENGTH=914mm TOLERANCE: ±25.4mm
(2) LENGTH=1829mm TOLERANCE: ±25.4mm
(3) LENGTH=3048mm TOLERANCE: ±50.8mm
(4) LENGTH=4572mm TOLERANCE: ±50.8mm

PIN OUTS		
USB AM	WIRE COLOR	USB AF
1	RED	1
2	WHITE	2
3	GREEN	3
4	BLACK	4
SHELL		SHELL

ITEM NO	PART NAMES	Q'TY	REMARK
3	CONNECTOR: USB A FEMALE PLATE WITH GOLD INSULATOR COLOR: WHITE	1PCS	
2	CONNECTOR: USB A MALE PLATE WITH GOLD INSULATOR COLOR: WHITE	1PCS	
1	CABLE: USB 28AWG*1P+26AWG*2C	1PCS	

	PRODUCT	USB A MALE TO USB A FEMALE	CUSTOMER		DRAWN	Hvon .W	 THREE ANGLE PROJECTION
	CUS,NO	601-XXX	VERSION		CHECKED	Jackson Cang	
	DR,NO	SD601-XXX	DRAWN DATE	OCT.16.2000	APPROVED	Jonny Chuang	