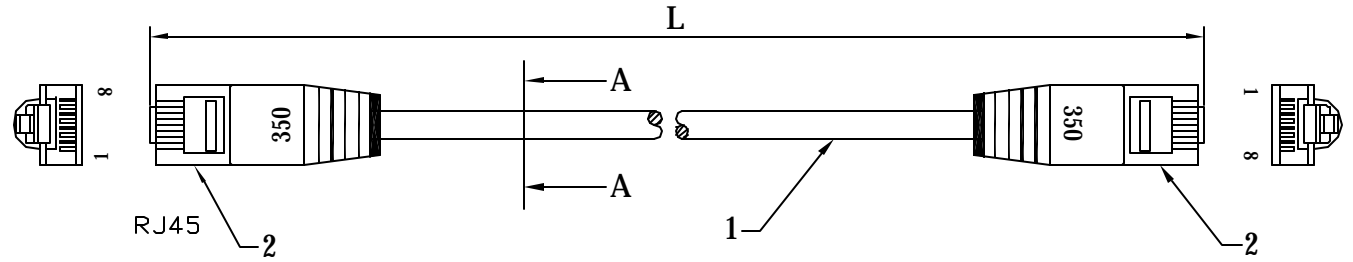
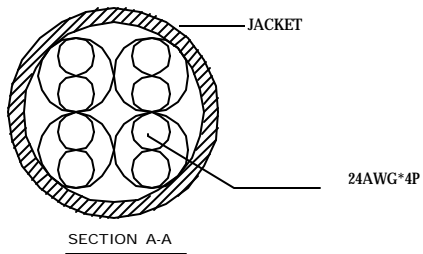


REVISIONS		
REV	DESCRIPTION	APPROVED



NOTES:  
 1. MOLDED CONNECTOR END REQUIREMENTS:  
 A: PVC - 65P BLUE, GREEN, BLACK, ORANGE, RED,  
 GRAY, WHITE, OR YELLOW TO MATCH COLOR OF  
 CABLE


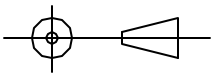
NOTES:  
 CABLE: [24AWG(7/0.209)\*4P]BARE  
 INSULATION: HD-PE  $\phi D = \phi 1.0 \pm 0.02MM$   
 COLOR: BL&WH/BL. OR&WH/OR. GN&WH/GN. BN&WH/BN  
 JACKET: 80°C PVC  $\phi D = \phi 5.3 \pm 0.3MM$   
 COLOR: CHOICE OF -- BLUE, GREEN, BLACK, ORANGE,  
 RED, GRAY, WHITE, OR YELLOW  
 PRINT: ENHANCED 350MHZ PATCH CORD 24AWG  
 4PR 2835 E87647-DG AWM 60°C 30V  
 LL58663 CSA AWM 80°C 30V FT1 ETL VE  
 RIFIED TO TIA/EIA 568A CAT5e



P/N	LENGTH(mm)	TOLERANCE(mm)
241Sc-1F-X5F	305	±25.4
241Sc-2F-X5F	610	±25.4
241Sc-3F-X5F	914	±25.4
241Sc-4F-X5F	1219	±25.4
241Sc-5F-X5F	1524	±25.4
241Sc-6F-X5F	1829	±25.4
241Sc-7F-X5F	2134	±25.4
241Sc-8F-X5F	2438	±25.4
241Sc-9F-X5F	2743	±25.4
241Sc-10F-X5F	3048	±50.8
241Sc-12F-X5F	3658	±50.8
241Sc-14F-X5F	4267	±50.8
241Sc-15F-X5F	4572	±50.8
241Sc-20F-X5F	6096	±76.2
241Sc-25F-X5F	7620	±76.2
241Sc-30F-X5F	9144	±76.2
241Sc-35F-X5F	10668	±76.2
241Sc-40F-X5F	12192	±76.2
241Sc-50F-X5F	15240	±76.2
241Sc-60F-X5F	18288	±101.6
241Sc-75F-X5F	22860	±101.6
241Sc-100F-X5F	30480	±101.6

568B PIN OUTS			
WIRE COLOR	RJ45 PLUG	RJ45 PLUG	WIRE COLOR
WHITE/ ORANGE	1	1	WHITE/ ORANGE
ORANGE	2	2	ORANGE
WHITE/GREEN	3	3	WHITE/GREEN
BLUE	4	4	BLUE
WHITE / BLUE	5	5	WHITE / BLUE
GREEN	6	6	GREEN
WHITE / BROWN	7	7	WHITE / BROWN
BROWN	8	8	BROWN

ITEM NO	INSULATION UPON 1M ohm AND 1M ohm	ELECTRIC CONDUCTION(INSIDE 15K ohm	COLOR AS LISTED	
2	PLUG : RJ45 MOLDED 8P8C		2PCS	
1	CABLE: 24AWG 4PR 350MHz CAT5e $\phi D = 5.3 \pm 0.3mm$		1PCS	
ITEM NO	PART NAMES		Q'TY	REMARK

	PRODUCT	RJ45/RJ45 CAT5E	CUSTOMER		DRAWN	Ocean .F	 THREE ANGLE PROJECTION
	CUS,NO	8-7900XRD-XXX	VERSION		CHECKED	Jackson Cang	
	DR,NO		DRAWN DATE	DCE.20.2000	APPROVERD	ROY	