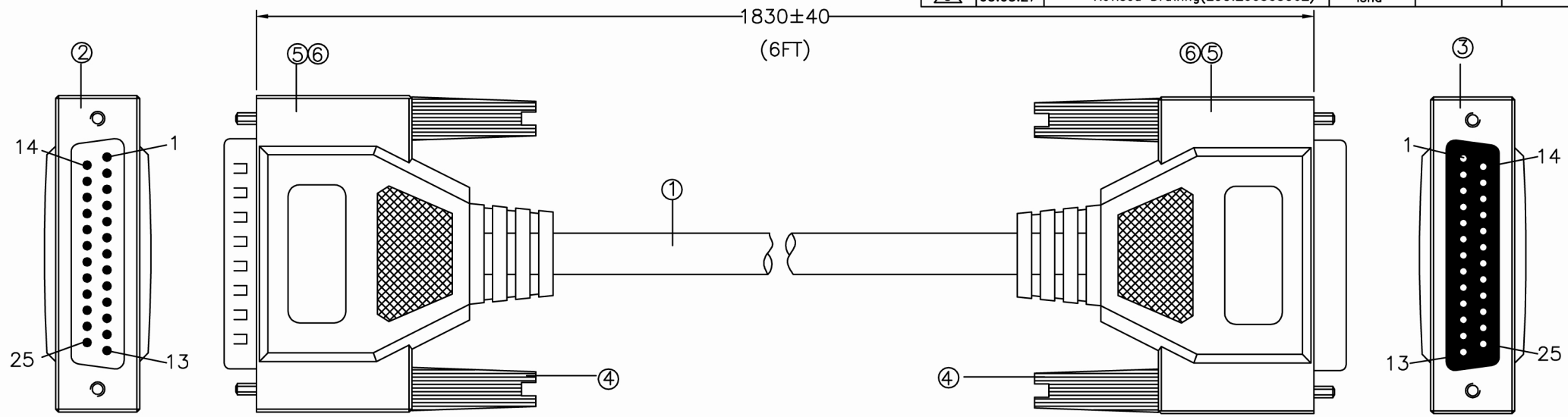


REV	DATE	REV. DIMENSION	DRAW	CHECK	APPROVE
ⓑ	01.12.14	Change Drawing Rev&Add Electronic Test			
ⓒ	05.05.27	Revised Drawing(ECO:200505062)	Ishd		



Conn.1 DB 25P Male Mold


Conn.2 DB 25P Female Mold
Pin Assignment

Electronic Test :

1. Contact Resistance : 2.0 ohm max
2. Insulation Resistance : 10M ohm Min
3. Hi-Pot : 300V DC/10ms

Conn.1	Conn.2	Conn.1	Conn.2
1	1	14	14
2	2	15	15
3	3	16	16
4	4	17	17
5	5	18	18
6	6	19	19
7	7	20	20
8	8	21	21
9	9	22	22
10	10	23	23
11	11	24	24
12	12	25	25
13	13	SHELL	SHELL

⑥	Outer Molded :45P PVC Color PMS 453C (Beige)	68/1000	kg
⑤	Inner Molded : PE248	14/1000	kg
④	Screw : E30.5 #4-40 453C(Beige)	4	pcs
③	Connector : DB 25P Female Solder Type Blue	1	pcs
②	Connector : DB 25P Male Solder Type Blue	1	pcs
①	Cable : NON-UL 28AWG*25C +D.W.+AL/MY+Jacket Jacket Color : PMS 453C(Beige) OD=7.2±0.15mm	1.83	m
NO	P/N	DESCRIPTION	Q'TY UNIT

		DESCRIPTION		RoHS Compliant	
		PART No.		M20MF-0625A	
DRAW		DWG. No.		REV.	C
CHECK		DATE	05,05,27	SCALE	NONE
APP.		SIZE	A4	UNIT	mm
				SHEET	1/1