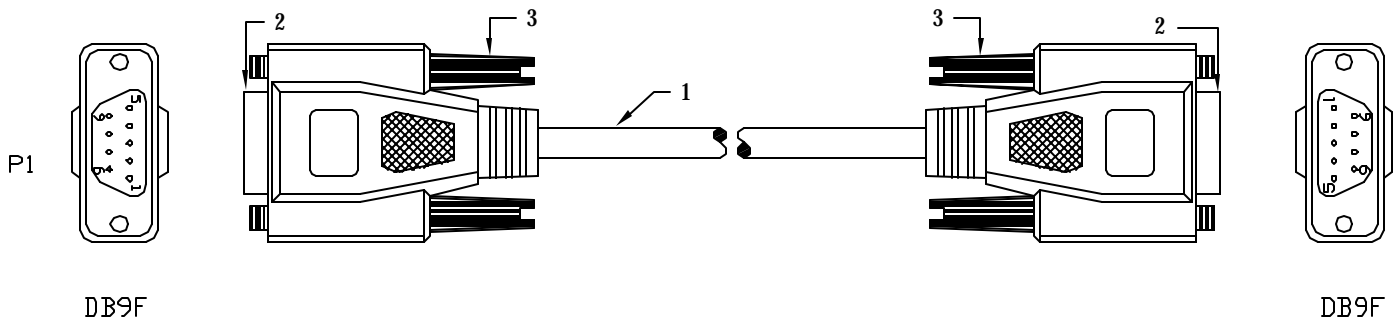
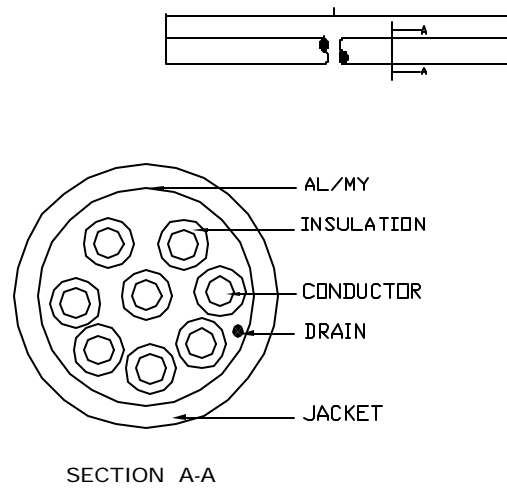


REVISIONS		
REV	DESCRIPTION	APPROVED



PIN	OUTS
DB9P FEMALE	DB9P FEMALE
4 — BLACK —	1
1 —	6
6 — BROWN —	4
2 — RED —	3
3 — ORANGE —	2
5 — YELLOW —	5
7 — GREEN —	8
8 — BLUE —	7
9 — PURPLE —	9
Shell	Shell



NOTES:

1.MOLDED CONNECTOR END REQUIREMENTS:
 A.INNER MOLD USING PE
 B.ALUMINUM FOIL WRAP TO CONNECTOR
 C.PVC - 45P PLATINUM GRAY

2.CABLE:[28AWG (7/0.12)*8C+AL/MY +DW(7/0.16)]TIN
 WIRE:OD=0.78±0.03mm
 COLOR: P1 COLOR CODE
 JACKET: PVC OD=5.0±0.15mm
 COLOR:PLATINUM GRAY

3.FINISHED PRODUCTS LENGTH:
 (1) LENGTH=1829mm TOLERANCE:±25.4mm
 (2) LENGTH=3048mm TOLERANCE:±50.8mm
 (1) LENGTH=4572mm TOLERANCE:±50.8mm
 (1) LENGTH=7625mm TOLERANCE:±76.2mm

ITEM NO	PART NAMES	Q'TY	REMARK
3	THUMBSCREW: MALE 4*47mm NICKEL-PLATING	4PCS	
2	CONNECTOR:DB9P FEMALE NICKEL-PLATING, INSULATOR COLOR:BLUE	2PCS	
1	CABLE:8C+1 28AWG	1PCS	



PRODUCT	DB9P FEMALE TO DB9P FEMALE	CUSTOMER		DRAWN	Hvon .w
CUS,NO		VERSION		CHECKED	Jackson H
DR,NO		DRAWN DATE	DEC.21.2002	APPROVERD	Jacky Lin

